

When the
Airflow
counts



LDV T60 Snorkel

Fitting Instructions

Item# S026

Introduction

Airflow Vector Pty Ltd thanks you for your purchase and the trust you put in our products. We strive to supply our customers with the highest quality equipment based on the most efficient design and best styling. We are confident that you will enjoy using our snorkel system. It should improve the power of your vehicle as well as reduce its fuel consumption.

General instructions

Follow carefully the instructions listed on these pages and use the template provided, **do not over tighten bolts. Do not use silicone on any connections, use mastic.**

Ensure that safe work practices are followed when installing your Airflow Snorkel. Protective ear and eye wear should be worn at all times when using power tools.

Disclaimer

It is highly recommended that installation is undertaken by a qualified mechanic or panel beater. Airflow Vector will not be held responsible for any damage incurred through incorrect fitment of the templates and workmanship. It is the responsibility of the fitter to ensure that particular care is taken when assembling the snorkel kit to the vehicle as it may cause damage to the windscreen and or electrical components. Safe work practices must be used at all times when undergoing installation.

We guarantee Airflow Vector's kits against manufacturing defects as long as proof of purchase can be established.

All models produced by Airflow Vector are verified to suit right hand drive vehicles according to Australian specifications. Variations in vehicle specifications may occur in other markets. If you're in doubt about the product suitability, please forward a photograph of the engine bay, air filter housing and photos of the vehicle at frontal/side position to info@airflowvector.com

List of tools and additional parts required

- Masking tape
- Clear tape
- Black mastic
- Hammer
- Centre punch
- Assorted screw drivers
- Sockets and spanners
- 76mm Holesaw
- Assorted drill set
- Wet/Dry sandpaper
- 1/2" Round file
- Small square file
- Zinc rich primer

It may be necessary to acquire new fixings from LDV to replace the inner guard fixings if they get damaged during their removal.



S026 Kit Contents

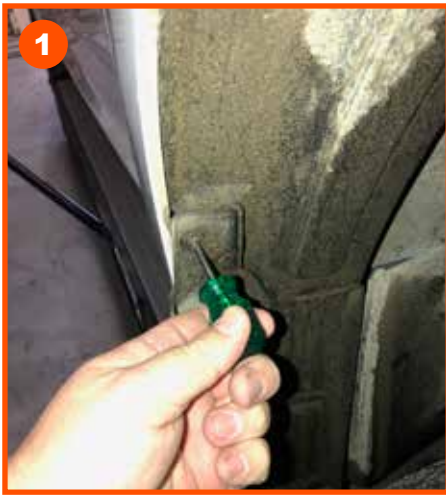
Item#	Description	Qty
SP084	Snorkel LDV T60	1
SP063	Air Ram 3.5"	1
SP246TT	Under Bonnet 90' Bend	1
SP201 T60	Under Bonnet 90' Bend	1
SK060	Bolt kit	1
SP019	Hose Clamp 60/80mm	2
SP018	Hose Clamp 80/100mmBLK	1
SP171	Plastic bag 280x380mm	1
SD026	Template	1
SD026DE	Booklet	1

Please ensure all parts listed are included in the parcel before starting installation.

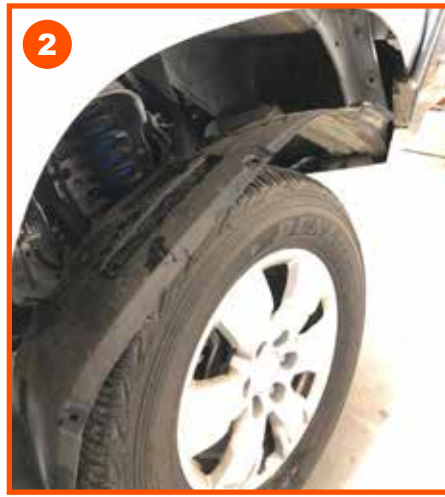
Bolt Kit Contents (SK060)

Item#	Description	Qty
SP044A	A Pillar Standard S026 BLK	1
SP025	Washer Panel 1/4 x 1.1/4 x 16g Z/P	8
SP029	Screw Self Tap 10gx5/8 Z/P	1
SP024	G/Bolt M6 x 12mm BLK	1
SP026	Screw Plug Nylon	2
SP029	Screw Self Tap 10gx5/8 BLK	3
SP023	Washer Spring 1/4 x 1/4 BLK	1
SP022	Stud M6 x 25mm Z/P	8
SP027	Flange Nut M6 Z/P	8
SP170	Plastic bag 75x125mm	1

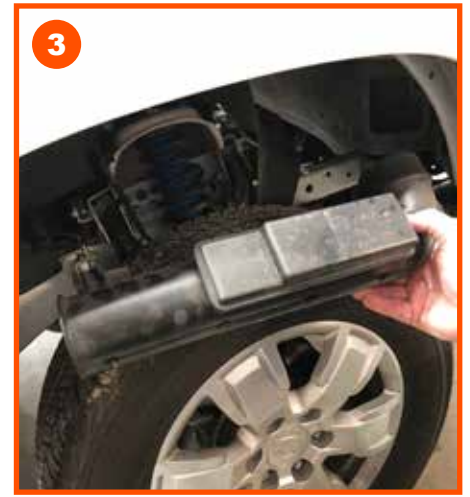
The total expected time of installation is approximately 2 hours.



1 Remove mud flap



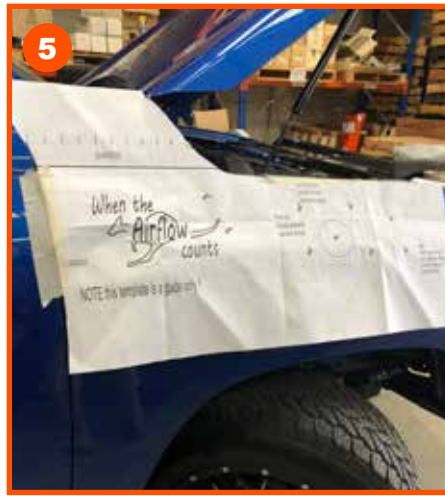
2 Remove inner guard



3 Remove anti-vibration packer & inner guard ducting to air box



4 Cover work area with masking tape on guard and 'A' pillar



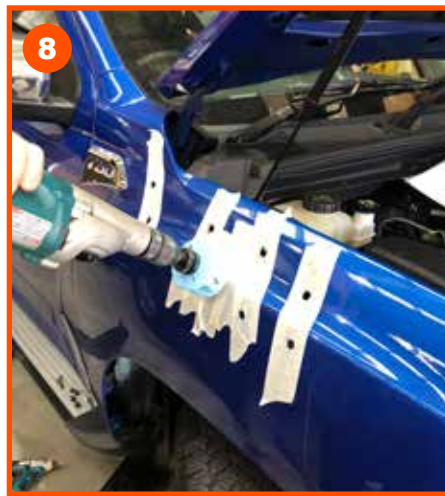
5 Cut template along the guard line. Attach the template to the guard ensuring it is lined up and fits to the contours of the guard.



6 Mark all holes and centre punch



7 Pre-drill all holes with a 3-5mm drill. Drill all mounting holes to 11mm



8 Using a 76mm holesaw, drill the snout hole at low speed.



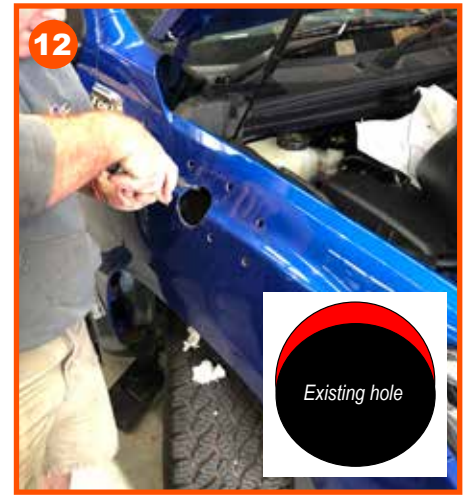
9 Insert studs into the snorkel body (larger stud required for the bottom elbow hole). **Do not over tighten**



Place snorkel on guard



Check for clearance and fit to body



Open up the snout hole **as required** approximately 3-4mm on the top half only.



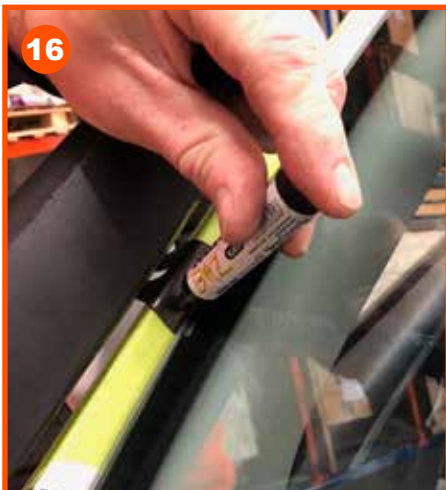
Once happy with the fitment against the guard, remove any burs and rust-proof the holes



Fit the 'A' pillar bracket to the snorkel loosely, do not tighten.



Fit the snorkel on to the guard using only 3-4 nuts



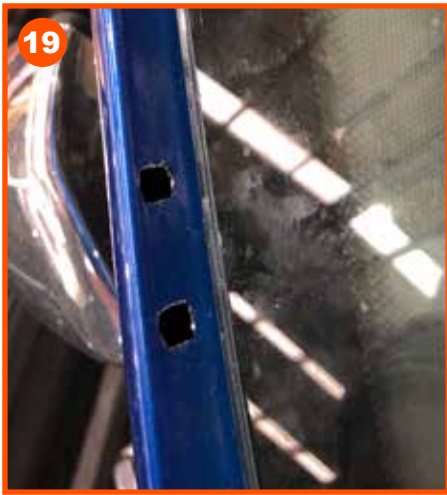
Mark the position of the 'A' pillar bracket on the masking tape. Remove the snorkel.



Mark the inner 'A' pillar with a line only 5mm from the top edge



Line up the bracket position with the inner 'A' pillar line to confirm the two holes for the bracket. Centre punch the two 'A' pillar holes



19 Drill the 'A' pillar holes to 7mm. File the holes with a square file to suit the nylon plugs.
Be careful not to damage the glass



20 Rust proof the holes. Once the rustproof is dry, insert the nylon plugs being careful not to damage the glass



21 Snorkel can now be mounted onto the guard with washers and nuts provided. Tighten mounting bolts evenly.



22 Screw the 'A' pillar bracket to the 'A' pillar with button head screws. **Be careful not to damage the glass**



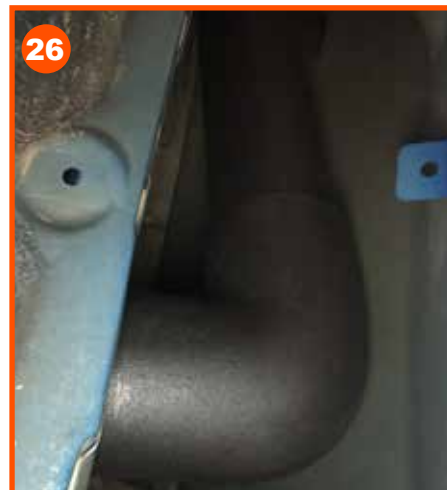
23 Remove air box cover and air cleaner.



24 Seal any holes inside the air box with Butal mastic sealant.



25 Smear sealant inside the join of the inner guard pipe including the section that mounts onto the snorkel and the outside section that mounts inside the air box.



26 Fit the inner guard pipe to the air box and then adjust to fit the snorkel.



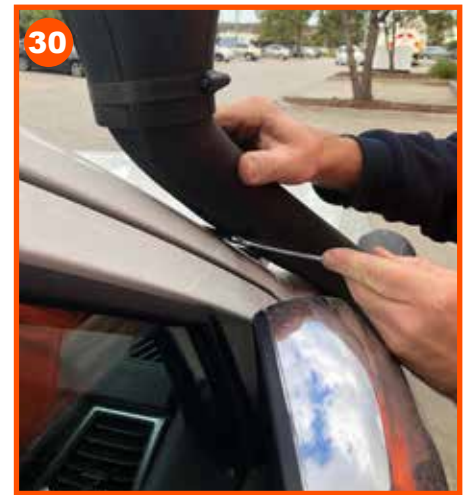
27 Insert a self-taper screw through the top of the air box ducting through the inner snorkel pipe



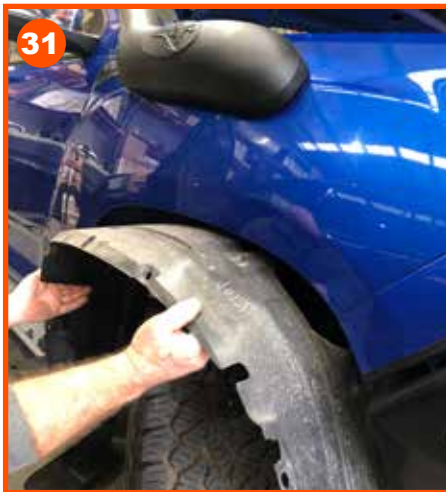
Check sealing from inside the air box and use more sealant if required. Re-fit air cleaner and air box cover.



Mount the air ram facing forward and tighten the hose clamp. For extreme conditions, drill a 3mm hole through the air ram hose clamp and insert a button screw.



Tighten the 'A' pillar bracket to the snorkel and adjust position as required



Re-attach inner guard and mud flap



Polish with silicone cleaner.

Important note:

Do not turn the Air Ram away from the direction of travel because it will lessen the positive pressure necessary for proper operation. **In extreme situations, at speeds above 25km/h (15m/h) a vacuum may be generated causing irreversible engine damage**

Improvement Program

We strive to produce documentation and kits free of mistakes, however, should you discover any error or omission, please let us know. Furthermore, if you think that a step of this procedure could be improved, please email us at info@airflowvector.com with your suggestions indicating the procedure name, its release date, the step details and the photo if necessary.

We appreciate your support.

When the



Distributed by:
Ateco Equipment

Phone: 1300 669 951
Email: airflow@ateco.com.au

www.atecoequipment.com.au